



Platform Update Release Notes

Release 3.3

2013-12-03

Contents

- Overview 1
- Business Intelligence 2
 - New Help Content 2
 - Improved Interface Texts 2
 - New Tool Tips 2
- Commerce Assistant 3
 - Pre-Defined Regions 3
 - Minimize to System Tray 3
 - Visual Distinction between cleverbridge and Client Items 4
 - Open Products from within Other Portals 4
 - Preview when Uploading Key Lists 5
- Checkout Process 6
 - Product Selections Support Dynamic Discounts 6
 - Wire Transfer Information for SEPA 6
 - Klarna Supported as Payment Type 6
 - Terms and Conditions and Privacy Policy Available for Download 7
- APIs 8
 - Customer ID now Always Assigned 8



Overview

cleverbridge announces platform release 3.3, which introduces new help content for Business Intelligence, and enhancements to the Commerce Assistant, the checkout process, and APIs.

For more information about any of the new features and enhancements in release 3.3, contact your cleverbridge client manager.



Business Intelligence

The following enhancements were made to Business Intelligence.

New Help Content

Business Intelligence now includes help information integrated into the application. The help should assist clients with:

- Instructions for how to use Business Intelligence
- Descriptions of every measure and dimension
- Example report descriptions with shortcut links users can click to open the report already configured in Business Intelligence
- Information about how Business Intelligence calculates data
- Training exercises

Improved Interface Texts

The texts across the application have been improved to better assist users. Clients can expect to see interface texts that differ from the previous version of Business Intelligence.

New Tool Tips

The application now contains new tool tips for better user assistance. The tool tips are comprehensive across the application.



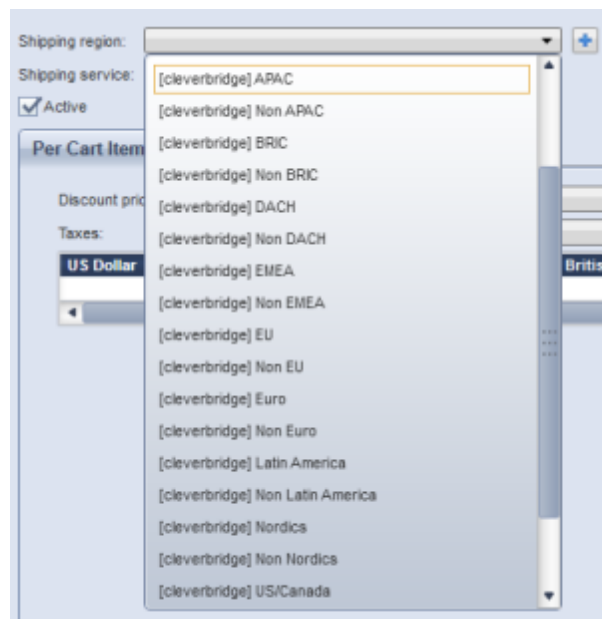
Commerce Assistant

The following enhancements were made to the Commerce Assistant.

Pre-Defined Regions

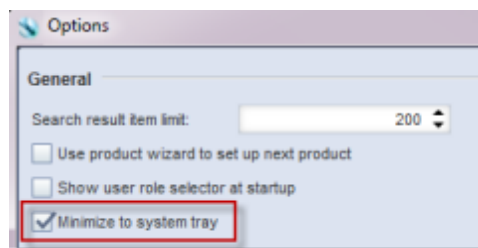
Clients can define customized regions to be used in shipping configurations, price configurations, marketing campaigns, and reporting. With this release, cleverbridge now offers a series of pre-defined, common regions that clients can easily select instead of having to configure them themselves. These regions are maintained by cleverbridge and will be updated as regions change, such as when a new country enters the European Union (EU).

The pre-defined regions display at the bottom of region drop-down lists and are preceded with the text **[cleverbridge]**. To view what is included in the pre-defined regions, clients can use the Regions search to find and open them.



Minimize to System Tray

Clients now have the option to minimize the Commerce Assistant to the system tray, which is located in an area of the Windows task bar and contains miniature icons for easily and quickly accessing system functions or applications. This option can be enabled in the Commerce Assistant Setup menu, Options window.





When enabled, the Commerce Assistant is minimized to the system tray instead of the main task bar. Clicking the icon maximizes the application again.



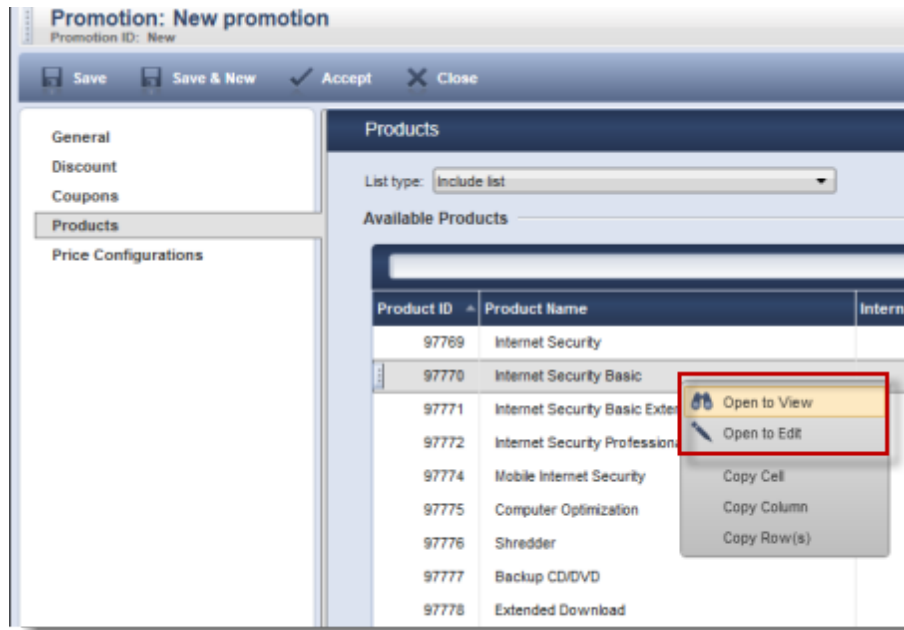
Visual Distinction between cleverbridge and Client Items

cleverbridge includes several items in the Commerce Assistant that clients cannot edit, such as a set of pre-defined privileges, regions, or templates. To help clients better distinguish between these cleverbridge items and their own items, in the Privileges, Regions, and Templates searches, cleverbridge items are now gray.

Privilege ID	Name
23	Administrator
37	Top-Level Management
32	Quality Assurance Manager
650	API User
25	e-commerce Manager
24	Web Designer
884	E-Commerce Specialist
31	Financial / Accounting
27	Marketing Manager
26	Customer Support
883	Master Manager
30	Product Manager
29	Key Account Manager

Open Products from within Other Portals

In several features throughout the Commerce Assistant, users select from a list of products, such as adding a product to a promotion or recommendation. To better assist users in accessing products from these features, users can now right-click one or more products in a list to directly open them.



Preview when Uploading Key Lists

Now when users upload a key list using the Key List portal, a window displays with a preview of the keys. Also, binary files are not accepted in order to protect users from mistakenly uploading a wrong file. The format for license key files must be either TXT or CSV, with one key per line.



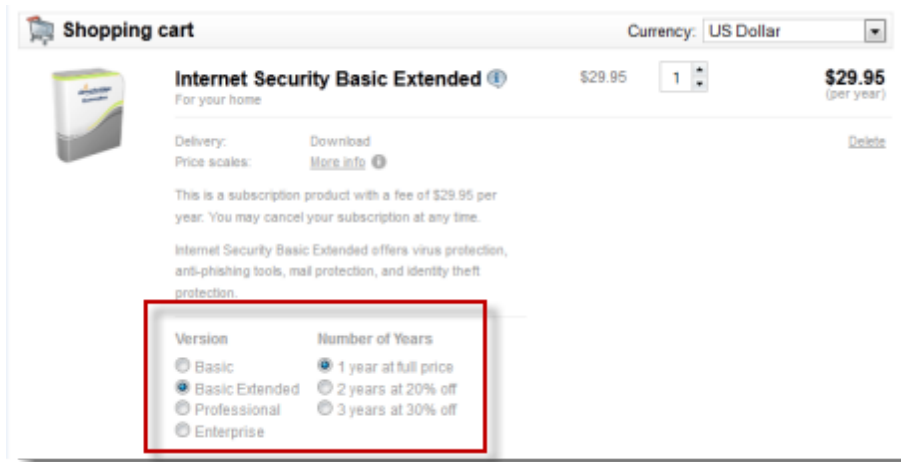
Checkout Process

The following enhancements were made to the checkout process.

Product Selections Support Dynamic Discounts

cleverbridge offers a web-based API to create dynamic discounts, which allow clients to dynamically submit discount information without the need to create a promotion or likewise in the cleverbridge system.

Clients can also create product selections, which are separate SKUs that provide a way for customers to choose between different options for a product in the cart, such as license period or the number of supported users.



Clients can now pass a discount with the dynamic product parameter for a product selection. The discount is applied for all items within the product selection. The discount can be passed for all items in the cart with the `&dp=` parameter, or only to a specific product selection in the cart with the `&dp_s<selection ID>=` parameter. For more information, contact your cleverbridge client manager.

Wire Transfer Information for SEPA

In February 2014, European banking will switch to a new account numbering system called SEPA (Single Euro Payments Area), which is an initiative of the European Union (EU) to simplify bank transfers for Euro payments. cleverbridge is working to make this transition as smooth as possible for customers. In the past, cleverbridge has already presented IBAN and BIC (which are used within SEPA) to customers making wire transfers to other European countries. IBAN and BIC will now also be displayed, in addition to the existing numbers, to customers who make national wire transfers. This will help to prepare customers for making the switch exclusively to SEPA in the future.

Klarna Supported as Payment Type

cleverbridge is now integrating the payment provider Klarna, which is very popular in Sweden, into the checkout process. Klarna offers purchases on invoice for consumers and can help to increase conversion rates. A more detailed communication about Klarna will soon be sent to clients. cleverbridge will first run a pilot with select clients, and if interested, clients should contact their cleverbridge client manager for more information.



Terms and Conditions and Privacy Policy Available for Download

Customers can easily access the cleverbridge Terms and Conditions and Privacy Policy from the checkout process. These documents will now be available for customers to download by clicking a button at the bottom of the page.

Download this document by clicking the button:

Download



APIs

The following enhancements were made to API functionality.

Customer ID now Always Assigned

If a client is able to securely identify customers prior to an order, the client can pass the customer ID to cleverbridge. Later, clients can refer to that customer when using APIs for sending the customer back to cleverbridge, such as for subscription-related operations or single sign-on (SSO).

There are scenarios when clients cannot initially identify a customer, such as during initial sign-up through cleverbridge, when referred by a partner, or for a legacy customer. In these scenarios, a customer ID would not have been assigned, which can create later difficulty with SSO and APIs.

cleverbridge will now assign a customer ID in cases where none would initially be assigned. This provides more options to clients who wish to use this information later for SSO and APIs.

```
<?xml version="1.0" encoding="utf-8" ?>
- <cbn:PaidOrderNotification xmlns:cbn="http://xml.cleverbridge.com/2.190/cleverbridgeNotification.xsd">
  <cbn:NotificationDate>2013-11-12T21:28:02.828577Z</cbn:NotificationDate>
- <cbn:Purchase cbt:Id="51986444" xmlns:cbt="http://xml.cleverbridge.com/2.190/cleverbridgeTypes.xsd">
  <cbt:Status>Paid</cbt:Status>
  <cbt:StatusId>PAY</cbt:StatusId>
+ <cbt:BillingContact>
+ <cbt:DeliveryContact>
+ <cbt:LicenseeContact>
+ <cbt:PaymentInfo>
  <cbt:CustomerReferenceNo>CB-99992141510</cbt:CustomerReferenceNo>
  <cbt:CreationTime>2013-09-23T18:13:47.984028Z</cbt:CreationTime>
  <cbt:PaymentArriveTime>2013-11-12T21:28:02.828577Z</cbt:PaymentArriveTime>
  <cbt:LastModificationTime>2013-11-12T21:28:03.791493Z</cbt:LastModificationTime>
+ <cbt:Items>
  <cbt:ExtraParameters />
</cbn:Purchase>
</cbn:PaidOrderNotification>
```